

DIABETES RETINOPATHY- SCREENING



HISTORY



A Healthcare assistant will check your details to ensure they are up to date.

Ask about your eye history

Ask you to consent to use dilating eye drops

Ask for consent for anonymised data to be used in research

DILATING EYE DROPS

Dilating drops help to ensure high quality images for grading.

Dilating eye drops may or may not be used depending on where you are in the UK and whether or not they are required.



PHOTOGRAPHY

Images will be taken by a photographer. England/Wales and Northern Ireland take 2 images per eye, whereas Scotland take 1 image per eye. If eye drops have not been used and photographs are not of good quality the photographer will ask for drops to be used.

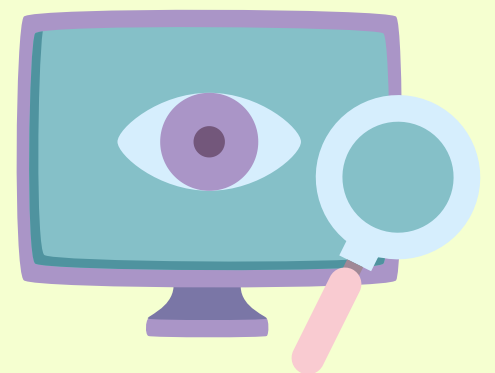


GRADING

Images are transferred to a grading centre
Trained graders will look at the images and grade them.

All screen positive and 10% of screen negative images are graded twice.

Results are sent to PWD, GP and diabetologist



OUTCOME

12 month recall R0, R1

3-6 month digital surveillance for R2, M1 not requiring referral

Referral to ophthalmology R2, R3, M1

